



AssanAlüminyum

ALUMINIUM SCRAP & SECONDARY MATERIALS

17.09.2018

Expected (Ideal) Composition Table For Provided Scraps:

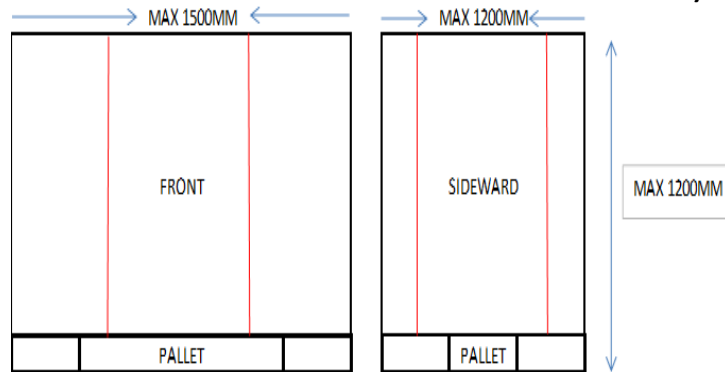
Alloy	Si	Fe	Cu	Mn	Mg	Zn	Cr	V	Ti	Pb+Cd+Hg	Others
1050 (b)	0,3	0,4	0,04	0,03	0,05	0,05	0	0,01	0,01	0,03	0,03
3003 (b)	0,25	0,7	0,1	1,5	0,07	0,07	0	0,01	0,01	0,03	0,03
3005 (b)	0,25	0,7	0,1	1,5	0,7	0,1	0,1	0,01	0,01	0,03	0,03
3105 (b)	0,28	0,7	0,1	0,6	0,7	0,05	0,05	0,01	0,01	0,03	0,03
5005 (b)	0,25	0,7	0,1	0,2	0,7	0,2	0,05	0,01	0,01	0,03	0,03
8006 (b)	0,35	1,8	0,04	0,65	0,05	0,1	0	0,01	0,01	0,03	0,03

- The sum of impurities for scrap aluminium materials “Pb+Cd+Hg (Lead +Cadmium + Mercury) should not exceed 300 ppm (%0,03).
- Vanadium content should not exceed 100 ppm (%0,01).
- Titanium content should not exceed 100 ppm (%0,01).
- Custom code must be specified as “**76 02 00 90**” for SCRAP ALUMINIUM
- Custom code must be specified as “**76 01 20 80**” for SECONDARY ALUMINIUM
- “Country of Origin” must be specified.
- Description of goods must be specified as “ALUMINIUM BRIQUETTED FOIL/SHEET SCRAPS” or “REMELTED SECONDARY ALUMINIUM INGOTS/SOWS”
- Our Purchase Order no, gross-net weights, unit price, total price should be stated on the invoice.

- All briquetted materials should be palletized. All pallets should be wooden pallets.
- All big bags should have a pallet underneath and fastened with strips. Two (2) strips is enough to fasten pallets with big bags.
- All materials should be loaded in a way allowing unloading safety with forklift.
- All materials should be dry; any material effected by water, snow or moisture will be rejected or claimed.
- All materials should not be coated with polyurethane, film or anodic oxidation. They should not contain oil, organic / inorganic chemicals, dirt, slag & oxide on the surface.
- Each type of scrap should be on a seperate pallet.

Clean Scraps

(Melted in Furnace & Induction Furnace)

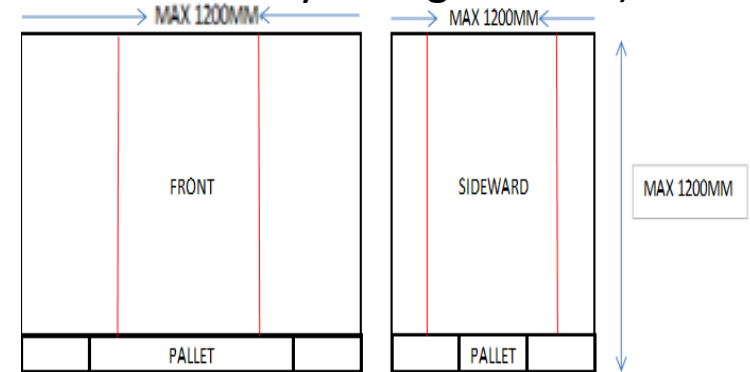


Red lines refers to plastic strips..!!
Max. Bale dimentions: 50x60x80CM



Painted Scraps

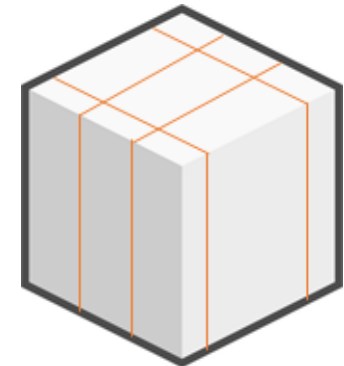
(Melted in Rotary Tilting Furnace)



Red lines refers to plastic strips..!!
Max. Bale dimentions: 50x60x80CM

MAX 1000 MM

- Weight of each packages should be apprx. 1000 kgs. (for scrap and secondary materials)
- Weight of each sows should be apprx. 700 kgs. (for secondary materials)
- Bale dimensions should be 50 cm x 60 cm x 80 cm. One pallet can contain more than one (1) bale.
- Pallet dimensions for **clean scraps** (sheet, foil, talon(wire)) should be max 1200 mm height, 1200 mm width, **1500 lenght**. (These dimensions are defined according to cast house melting furnace doors.)
- Pallet dimensions for **painted scraps** should be max 1200 mm height, 1200 mm width, **1200 lenght**. (These dimensions are defined according to cast house rotary tilting furnace doors.)
- Strips can be plastic or metal. If you use plastic strips, pls use more strips or you can use plastic wrapping in order to fix the materials to pallets. There should be four (4) strips and strips must surround the batch.
- Labelling should be included on the each pallet and should consist below details:
 - ✓ Supplier's Name
 - ✓ Alloy Type
 - ✓ Bale weight





1



2



3



3

- In our plants we are unloading containers with forklifts, so pallets should be suitable for handling forklifts.
- Pls check improper loading pictures in this page, these are all rejected and claimed.

- 1) Pallets do not placed correct. It is not possible to unload with forklifts.
- 2) Strips are not strong enough to hold the materials. Strips should be fixed with strip fixer not tied by hand.
- 3) Pallets are not stacked correctly. The pallets underneath should be straight and pallets should allow forklift forks to handle the upper material. If material fits in the pallet as there is not enough room in the container materials can not unloaded.



- Mainly 1xxx, 3xxx, and 8xxx series scraps can be used.
- All scrap types should not be coated or contaminated with gaskets and/or sealant. Other lubricants, such as hydraulic oils, grease are not acceptable.
- We do not accept composite materials and roof panels even they are cleaned up from plastics & foams. The chemicals and remaining particules cause problems in our furnaces.
- Content of mixed scrap batchs which consists two or more alloys have to be known according to type of each alloy.
- New Aluminium Can Stock punchings should be only 3104 alloy.
- Our alloy tables shared in the second page. Pls carefully review it. Our standarts for some alloys are below EN specifications, due to this fact we can not use/accept all 3xxx series materials.
- The scrap bales & pallets should not contain any iron, copper, zinc, wood or plastics parts.

CODE	DESCRIPTIONS	If Mixed, Accepted Alloys
Tablet	Clean Aluminum Lithographic Sheets	
Tabloid	New, Clean Aluminum Lithographic Sheets	
Taint Tabor	Clean Mixed Old Alloy Sheet Aluminum	1xxx, 3xxx
Take	New Aluminum Can Stock	3104
Tall	E.c. Aluminum Nodules	
Terse	New Aluminum Foil	
Tooth	Segregated New Aluminum Alloy Clippings And Solids	
Tough	Mixed New Aluminum Alloy Clippings And Solids	3xxx, 8xxx
Talon	New Pure Aluminum Wire And Cable	
Tann	New Mixed Aluminum Wire And Cable	1xxx, 3xxx
Tassel	Old Mixed Aluminum Wire And Cable	1xxx, 3xxx
Taste	Old Pure Aluminum Wire And Cable	
-	Painted Sheets	
-	Secondary Ingots & Sows	

NEW ALUMINUM FOIL

Shall consist of clean, new, pure, uncoated 1000 and/or 3000 and/or 8000 series of aluminum alloy. Foil scraps should be free from anodized foil, cheese foil, radar foil and chaff, paper, plastics, or any other non-metallic items.





REJECTED!





REJECTED!





Materials are rejected due to below details;

- Unproper bale,
- Without pallets,
- Inappropriate sized bales & pallets,
- Lacquered foils,
- Painted foils,
- Lubricated such as hydraulic oils, grease, glue
- Thin foils such as cheese foils,
- Coated or contaminated with gaskets and/or sealant,
- Oxidized materials,
- Packages & Bales contains any materials beside aluminium,
- Different materials from agreed chemical compositions.



REJECTED!





REJECTED!





REJECTED!







REJECTED!





SEGREGATED NEW ALUMINUM ALLOY CLIPPINGS AND SOLIDS

Shall consist of new, clean, uncoated and unpainted aluminum scrap of one specified aluminum alloy with a minimum thickness of .015" (.38mm) and to be free of hair wire, wire screen, dirt and other non-metallic items. Oil and grease should not be more than total 1%. Also free from punchings less than 1/2" (1.27 cm) in size.



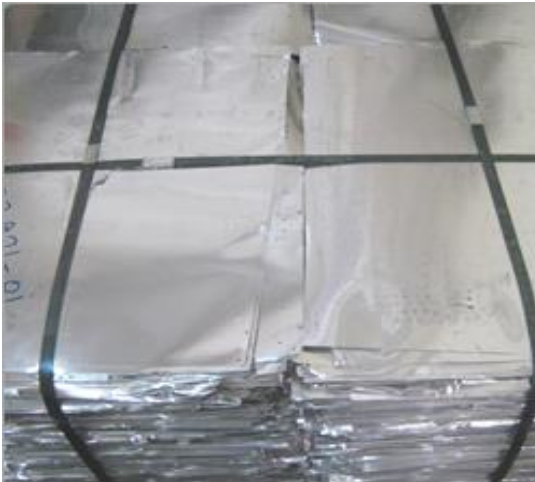
MIXED NEW ALUMINUM ALLOY CLIPPINGS AND SOLIDS

Shall consist of new, clean, uncoated and unpainted aluminum scrap of two or more alloys with a minimum thickness of .015" (.38mm) and to be free of hair wire, wire screen, dirt and other non-metallic items. Oil and grease should not be more than total 1%. Also free from punchings less than 1/2" (1.27 cm) in size.



NEW, CLEAN ALUMINUM LITHOGRAPHIC SHEETS

To consist of 1000 and/or 3000 series alloys, uncoated, unpainted, to be free of paper, plastic, ink, and any other contaminants. Minimum size of 3" (8 cm) in any direction.















NEW PURE ALUMINUM WIRE AND CABLE

Shall consist of new, clean, unalloyed aluminum wire or cable free from hair wire, ACSR, wire screen, iron, insulation and other non-metallic items.



OLD PURE ALUMINUM WIRE AND CABLE

Shall consist of old, unalloyed aluminum wire and cable containing not over 1%. Free from oxide or dirt and free from hair wire, wire screen, iron, insulation and other non metallic items.



E.C. ALUMINUM NODULES

Shall consist of clean E.C. aluminum, chopped or shredded, free of screening, hair-wire, iron, copper, insulation and other non-metallic items. Must be free of minus 20 mesh material. Must contain 99.45% aluminum content.











- The materials, which shipped by Big Bags should be in good condition and big bags should not be tore.
- Big bags should have a pallet underneath.
- Pallet and big bag should be fixed with strips.
- Each big bag should have max 1.000 Kgs

PAINTED SHEETS

Shall consist of painted thick materials. Should be thicker than 0,2 mm. Should be segregated in alloy basis. Should be free of grease, chemicals (like glue or etc...), plastics, gaskets, films, screws, etc...





REJECTED!



- The weight of *packages for secondary ingots* should be maximum 1000 kgs and the *unit weight of secondary sows* should be max 700 kgs.
- **Expected (ideal) composition table:**

Alloy	Si	Fe	Cu	Mn	Mg	Zn	Cr	V	Ti	Pb+Cd+Hg	Others
1050 (b)	0,3	0,4	0,04	0,03	0,05	0,05	0	0,01	0,01	0,03	0,03
3003 (b)	0,25	0,7	0,1	1,5	0,07	0,07	0	0,01	0,01	0,03	0,03
3005 (b)	0,25	0,7	0,1	1,5	0,7	0,1	0,1	0,01	0,01	0,03	0,03
3105 (b)	0,28	0,7	0,1	0,6	0,7	0,05	0,05	0,01	0,01	0,03	0,03
5005 (b)	0,25	0,7	0,1	0,2	0,7	0,2	0,05	0,01	0,01	0,03	0,03
8006 (b)	0,35	1,8	0,04	0,65	0,05	0,1	0	0,01	0,01	0,03	0,03

- The sum of impurities in remelted secondary ingots & sows “Pb+Cd+Hg (Lead +Cadmium + Mercury) should not exceed 100 ppm (%0,01).
- Vanadium content should not exceed 200 ppm (%0,02).
- Titanium content should not exceed 100 ppm (%0,01).
- Custom code must be specified as “**76 01 20 80**”.
- “Country of Origin” must be specified.
- Description of goods must be specified as “REMELTED SECONDARY ALUMINIUM INGOTS/SOWS” and gross-net weights, unit price, total price should be stated at the invoice.
- Our Purchase Order no, gross-net weights, unit price, total price should be stated on the invoice.



- Items that will be subject to immediate rejection of the entire load if found during the inspection are butane lighters, aerosol cans, hypodermic needles, live ammunition, explosives, gasoline, propane bottles or other gas cylinders or bottles, medical waste / infectious materials, radioactive material, PCB's, mercury, other heavy metals, asbestos, freon, poisons, acids, fertilizer, rodents, excessive corrosion, oxidizers, flammable liquids, closed containers, crimped tubing, lead paint and other questionable items. The presence of these items poses a safety hazard to personnel and is not debatable.
- Items that will be subject to immediate rejection of the entire load if found during the inspection any radioactive material & other questionable items. The presence of these items poses a safety hazard to human health and is not debatable. If the materials reach the maximum level for radioactivity, it is restricted to move the material and Turkish government has a branch named as; Turkish Atom Energy. We must inform them to exterminate the load. We will not be responsible if there will be any accusation or any charge for this extermination and we will charge these costs to your company.

- The supplier is obligated to meet the requirements indicated in this specification for each lot of materials delivered. The materials that do not comply with the specification shall be returned. ASSAN may bill the losses suffered by ASSAN due to any materials that do not comply with the specification to the supplier entirely at its discretion. In such a case, the reports issued by TUBITAK or ITU, ODTU, YTU shall be observed to determine the compliance of the material with the specification.

System and Product Documents	Period
System Documents	
ISO 9001 (association which prepares the documents must be accredited by one of IAF MLA members http://www.iaf.nu//articles/IAF_MEMBERS_SIGNATORIES/4)	Each Update (once in every three year)
RoHS compliance (If possible)	Yearly
REACH Declaration (If possible)	Once in every six month (June – December)
Product Documents	
Asbestos-free	Declaration

Thanks.