



# K-STAR Supplier Sustainability Program Training Document

*April 2023*

# Content

<b>1</b>	<b>Growth of Sustainability Awareness and Key Developments</b>
<b>2</b>	<b>K- STAR Supplier Sustainability Program</b>
<b>3</b>	<b>Survey Interface</b>

A photograph on the left side of the slide shows a woman in a white dress carrying a young child on her back. They are both looking towards a field of wind turbines at sunset. The sun is low on the horizon, creating a warm, golden glow and long shadows. The woman's right arm is extended, pointing towards the turbines. The child has their arms around the woman's neck.

# 1) Growth of Sustainability Awareness and Key Developments

# The Concept of Sustainability



The concept of sustainability entered our lives and started to take shape with the «Brundtland Report» published by the United Nations in 1987. Sustainability refers to a holistic perspective consisting of not only environmental but also ecological, social and governance components.



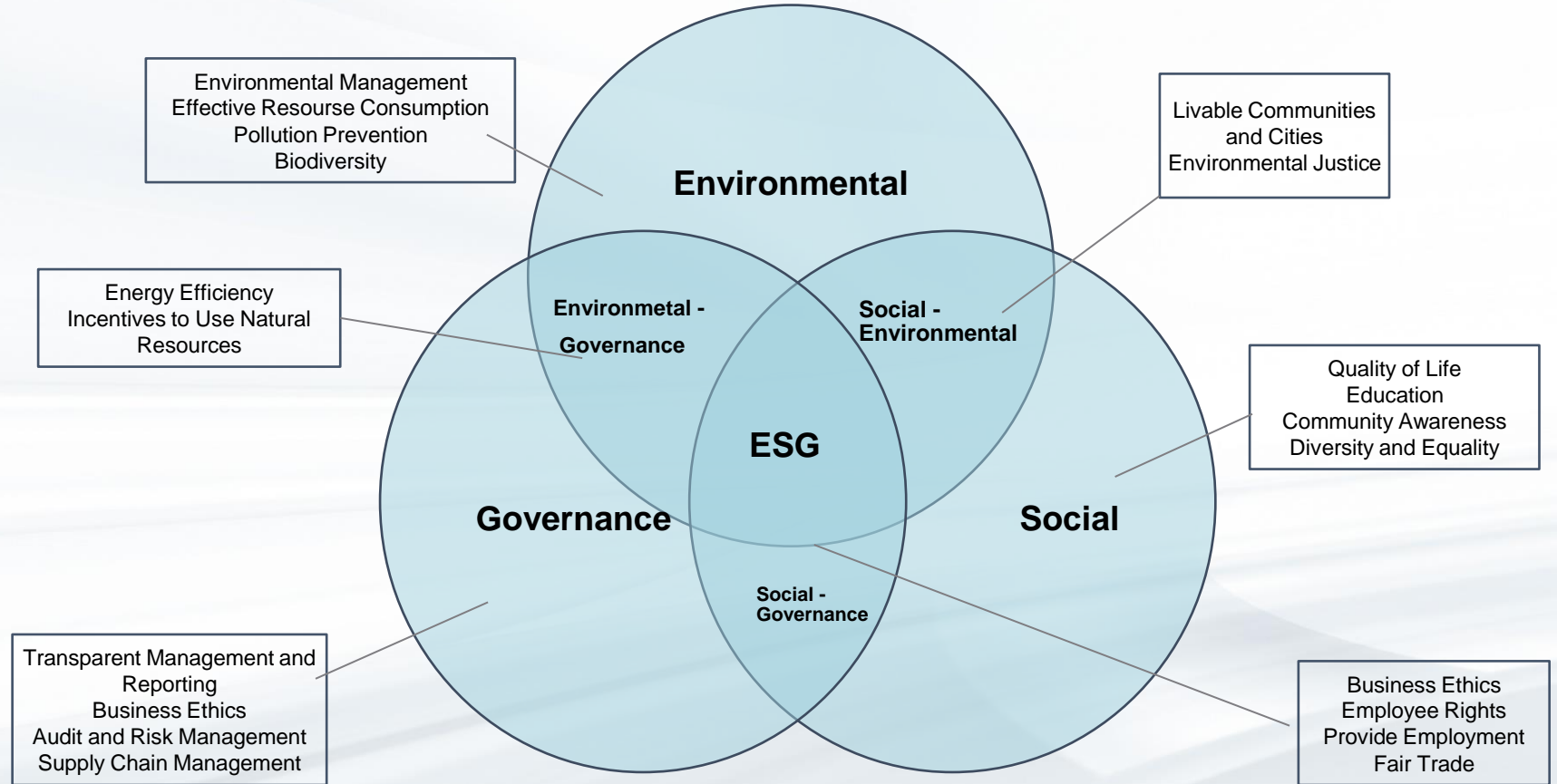
Sustainability means meeting our own needs without compromising the ability of future generations to meet their own needs

World Commission on Environment and Development (WCED)

# Three Pillars of Sustainability



Focusing on environmental, social and governance (ESG) issues not only provides companies with the ability to create long-term value, but also positively affects companies' financial performance.



# Most Confusing Terms in Sustainability



**Circular economy** is an economic model that aims to maximize the value of resources and minimizes waste by keeping materials in use for as long as possible. Unlike the traditional linear economy, where resources are extracted, processed, used, and then discarded as waste, a circular economy emphasizes the importance of designing products for durability, repairability, and recyclability, and encourages the reuse and repurposing of materials.



To be **carbon neutral**, it is sufficient to offset emissions with emission certificates purchased from voluntary markets.

For **net zero emission**, emissions must be minimized and the remaining emissions must be balanced with market instruments, which are technically and/or financially impossible to reduce.



**Greenwashing** can be expressed as the conscious or unconscious incompatibility between the sustainability preferences of customers and the sustainability-related features of financial services or products.



GREENWASHING

**Carbon negative:**  
It is the name given to an organization removing more carbon than it emits. It requires setting **Science-Based Targets** to reduce emissions to net zero and balancing or eliminating more than inevitable emissions.

# Benefits of Sustainability



**Sustainability** is a key component in ensuring that **environmental, social and governance (ESG)** programs create long-term value and business continuity within the company.



## Sustainability Reporting - Better Stakeholder Relationship

It provides a better understanding of company goals and action plans.



## Efficiency

As a result of the sustainability initiatives, the management of operational risks has been improved in the coming years thanks to efficiency management.



## Innovation

It ensures the development of new products and services by effectively managing sectoral risks and opportunities.



## Awareness and Strong Reputation

It ensures that stakeholder expectations are met, and a responsible business image is maintained.



## Talent Acquisition and Retention

A firm's sustainability policy affects talent acquisition and retention, access to capital, and consumer choices.

# The Most Serious Risks Expected in Next 10 Years



Along with the six most critical long-term threats to the world, climate change has been identified as the most potentially damaging threat to humans and the planet.

1. Failure to mitigate climate change

2. Failure of climate-change adaptation

3. Natural disasters and extreme weather events

4. Biodiversity loss and ecosystem collapse

5. Large-scale involuntary migration

6. Natural resource crises

7. Erosion of social cohesion and societal polarization

8. Widespread cybercrime and cyber insecurity

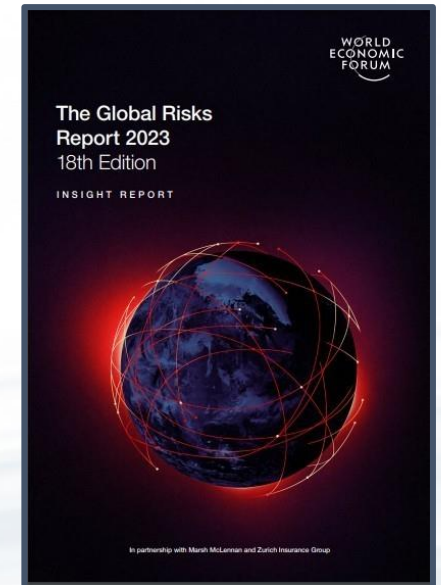
9. Geoeconomic confrontation

10. Large-scale environmental damage incidents

● Environmental

● Societal

● Technological





# SDGs and Kibar Group Sustainability Strategy



The United Nations Sustainable Development Goals (UN SDGs), or Global Goals, are a universal call to action to eradicate poverty, protect our planet and ensure that all people live in peace and prosperity.

The objectives committed to be achieved by 2030 consist of 17 interconnected objectives and 169 sub-objectives. The Sustainable Development Goals aim to end poverty, protect the environment, take measures against the climate crisis, share wealth fairly and achieve peace.



We **GROW** with sustainability principles



We **EMPOWER** people



We **INNOVATE** for the future



We **CARE** for next generations



We **ENCOURAGE** our stakeholders



We **SHARE** for the communities

Kibar Group 2025 Sustainability Strategy has been defined with the “Kibar Group Sustainability Principles” and has been shaped according to the Group's sustainability materiality.



# Recent Global Updates in Sustainability



*COP27: UN Climate Change Conference (COP27) Egypt, (6-20 November 2022)*

- Six roundtables' meetings were held as part of the World Leaders Summit. The importance of a holistic assessment of the process of combating climate change was emphasized in the topics of "**just transition**", "**innovative finance**", "**green hydrogen**", "**food security**", "**water security**" and "**climate change and sustainability in fragile communities**"; Ways to provide the necessary financing, resources and tools to effectively carry out climate action on a large scale were discussed.
- **«Loss and Damage Fund» funding vulnerable countries heavily affected by climate disasters:**
- Reaffirming target **1.5C**
- Provisions to increase **low-emission energy**
- **Climate finance:** A call for countries to urgently and significantly increase climate finance
- **Reform of the global financial structure:** Call on the "shareholders" of MDBs (Multilateral Development Banks) and other financial institutions to reform their "practices and priorities" to better align with climate goals
- **Carbon markets:** A more detailed framework for the functioning of global carbon trading, including allowing companies to purchase carbon credits from governments
- **Fossil fuels:** "Phasing out coal energy without carbon sequestration technology and phasing out inefficient fossil fuel subsidies"

# Recent Global Updates in Sustainability



## Task Force on Climate Related Financial Disclosures (TCFD):

- It was established by the Financial Stability Board (FSB) in 2015 to encourage more effective climate-related disclosures. Their recommendations (published in June 2017) focus on the financial impact of an organisation's climate-related risks and opportunities.



## Task Force on Nature-related Financial Disclosures (TNFD):

- It was established to work with TCFD in 2021 for a more comprehensive risk analysis.



## International Accounting Standards Foundation-IAF:

- It was founded on February 06, 2001. The IASB changed its name to International Financial Reporting Standards (IFRS) on July 1, 2010.



## International Sustainability Standards Board (ISSB) – 2021:

- It is the new standard created by IFRS for the demand for transparent, reliable and quality reporting on ESG issues.

## Sustainable Development Goals (UN SDGs):

- With 17 targets supported by 169 targets developed by the United Nations, companies have started to set targets that are compatible with the Sustainable Development Goals.



## The European Green Deal (2019) : has been adopted by the EU as a new growth strategy that transforms itself to minimize the effects of the global climate crisis and to aim for a competitive economy that uses resources effectively.

- End greenhouse gas emissions by 2050,
- Economic growth independent of resource use
- No person or territory is left behind (everyone is covered)

## Paris Agreement:

- It is a legally binding international agreement on climate change. It was adopted by 196 Parties at COP 21 held in Paris on 12 December 2015 and entered into force on 4 November 2016.



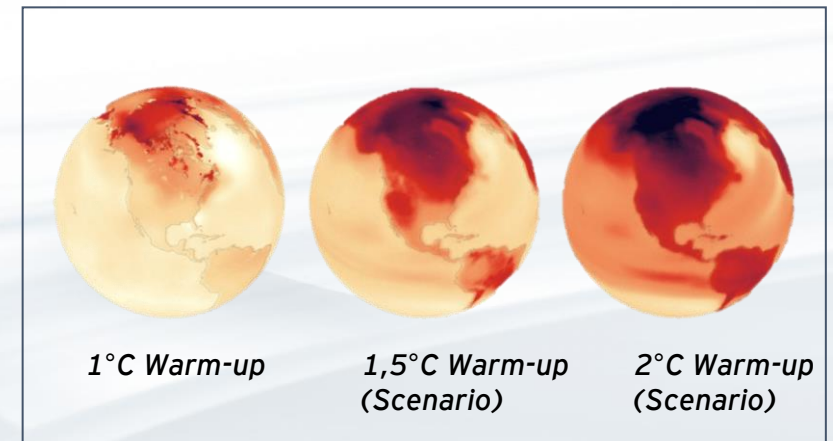
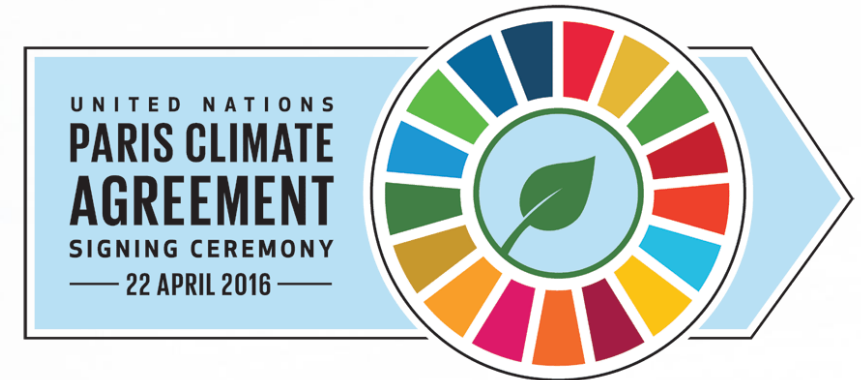
# Environmental Sustainability - Climate Crisis



The long-term goal of the Paris Agreement is to keep the global temperature rise as low as possible (1.5 degrees Celsius) as much as possible compared to the pre-industrialization period. This goal requires the transition to renewable energy by reducing the use of fossil fuels (oil, coal).

In the 1.5-degree scenario: Sea level is expected to rise by 26 to 77 centimeters, putting another 10 million people living in coastal areas at risk from storms and flooding. Heat waves will worsen, exposing 14 percent of the world's population to extreme heat at least once every five years.

After a warming of 1.5 degrees Celsius, a great danger awaits its biodiversity: Up to 90 percent of coral reefs could disappear.



# Causes of Climate Change & Effects of Climate Change



**Population Growth**

**Burning Fossil Fuels**

**Deforestation**

**Excessive/Fast Consumption**

**Irregular Urbanization**

**Misuse of Lands**

**Uncontrolled Industrialization**

**Increasing Agricultural Activities**



**Temperature Increases**

**Increase in the Frequency and Impact of Extreme Weather Events (such as droughts, floods, severe hurricanes)**

**Ocean and Sea Water Levels Rise**

**Increase in Oceanic Acidity**

**Melting of Glaciers**

**Plants, Animals, Ecosystems and Human Communities at High Risk**

**Decreased/Destroyed Resources**

**Infrastructure Damages**

# Measures to Combat the Climate Crisis



## Precautions to be taken in daily life

- The amount of waste produced can be minimized.
- Waste can be separated according to recycling categories.



- Public transport can be preferred.
- Travel by plane can be reduced.



- Heat loss can be prevented in homes.
- Energy-saving products can be preferred.



- Consumption habits can be reviewed.
- Eco-friendly alternatives can be considered in the products and services used.



- It can be consumed without allowing food to spoil.
- Eating habits can be re-evaluated.



## Precautions to be taken at work

Zero Waste, Economical Use of Water, Reduction of Greenhouse Gas Emissions and Energy Efficiency issues can be addressed as priority issues by monitoring them with quantitative KPIs.



The subject can be included in the corporate website of the company, in the related reports and bulletins to inform about the related issues.



Partnerships, collaborations and initiatives established within the scope of related topics can be expanded.



# Importance of Sustainability Stakeholder Approach



Integrating and managing sustainability requires dedicated leadership, clear direction and strategic influence.

## Stakeholder Approach:

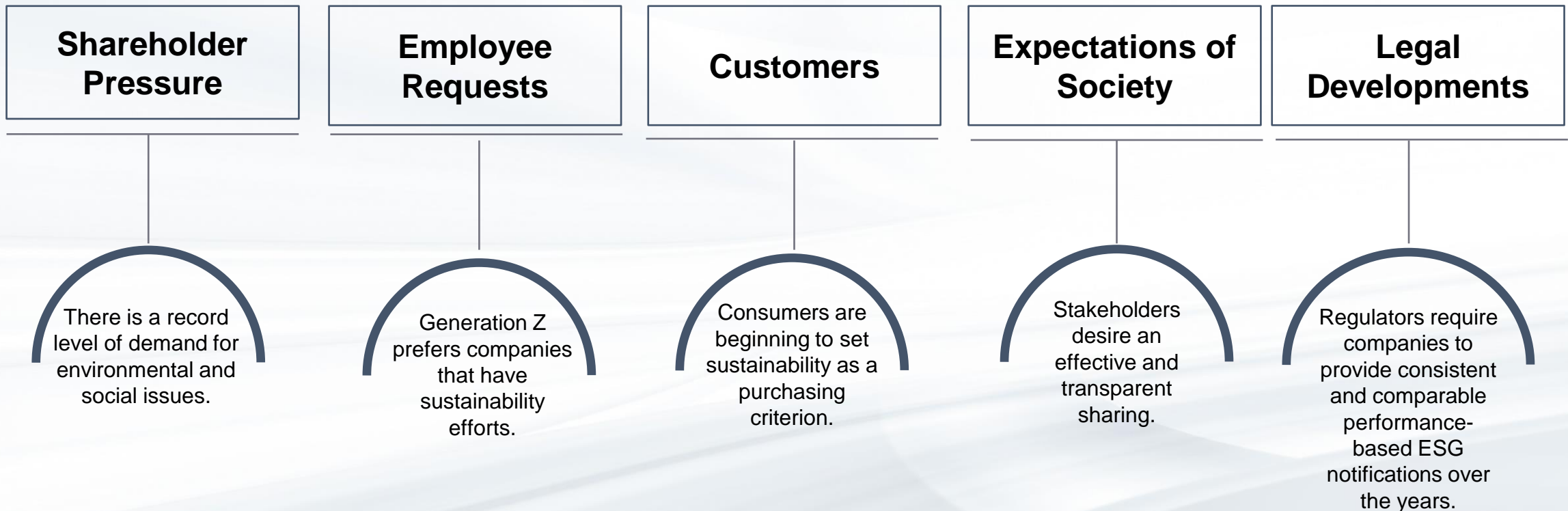
Sustainability governance centers on business operations that support socially responsible investment and reach for all, as a defining theme for the company's investment portfolios that can significantly impact long-term investment returns. Stakeholder engagement is a fundamental principle of sustainability. A business must be able to communicate with its external stakeholders to catch trends and better meet the **needs of its customers.**



# Investors' ESG Perspective



According to the information received from more than 60 investors;





# Human Rights Issues on Social Sustainability



Human rights are **rights inherent to all human beings**, regardless of race, sex, nationality, ethnicity, language, religion or any other status.

## *Working conditions*

- Excessive working hours
- Forced labour / Human trafficking
- Harassment and abuse
- Non respect of the right to be treated with humanity, respect and dignity

## *Child labor*

- Child labor
- Commercial Sexual Exploitation of Children

## *Fair remuneration*

- Unfair wages
- Wages below poverty level

- Non respect of health and safety rights / Occupational injuries & deaths / occupational toxics and hazards
- Inadequate social benefits and no access to social security

## *Health and safety*

- Non respect of indigenous population rights / Land issues
- Violence against local communities

## *Rights of local communities*

- Non respect of freedom of association, collective bargaining and right to strike
- Non respect of freedom of expression, thought and opinion

## *Rights to express*

# Why Should We Address Social Sustainability Issues?



**Human Capital Development**



**Diversity, equity & inclusion (DE&I)**



**Health & Safety and well-being at work**




## Human resources impact

- ▶ Less turnover
- ▶ Less absenteeism
- ▶ More satisfaction
- ▶ More productivity



## Business impact

- ▶ Reduction of direct cost
- ▶ Reduction of indirect costs
- ▶ Higher client satisfaction

The background of the slide is a photograph of a business meeting. A woman with long brown hair, wearing a brown blazer, is in the foreground, pointing at a sticky note on a glass wall. Behind her, two men are smiling and looking at the notes. The setting appears to be a modern office with large windows and contemporary lighting.

## 2) K- STAR Supplier Sustainability Program



**Kibar Sustainable Tomorrow**  
for Accelerated Results



In order to brighten our future, we light the way for our stakeholders on the path of sustainability with the K-STAR, meaning, Kibar Star.

## Main Program Objectives

- ❖ Protecting the environment to establish social equality, to support economic development and to provide a livable environment for future generations within this framework.
- ❖ Cooperating with our business partners in line with our sustainability vision and mission
- ❖ Developing our business partners, preparing them for the future so that we grow together
- ❖ Adapting for the regulations/legislation to be implemented in med-term

# Analysis of Sustainability Legislations



1 Industrial Emissions Directive (2010/75/EU)

2 The Clean Air For Europe Directive(2008/50/EC)

3 Water Framework Directive (2000/60/EC)

4 Waste Framework Directive (2008/98/EC)

5 Bird Directive(2009/147/EC)

6 Habitats Direktive (92/43/EEC)

7 The RoHS Directive

8 The Minamata Convention on Mercury

9 Stockholm Convention on Persistent Organic Pollutants

10 Seveso III Direktive (2012/18/EC)

11 CLP Regulation (EC) No 1272/2008

12 REACH (Registration, Evaluation, Authorisation and Restriction of Chemicals)

13 Basel Convention

# Other Sustainability Requirements



**Sustainable Development Goals (SDG)**



**Global Reporting Initiative**



**United Nations Global Compact (UNGC)**



**The German Supply Chain Act**



**Sustainability Accounting Standards Board**

## ENVIRONMENTAL

- Waste and Hazardous Materials Management
- Ecological Impacts
- Energy Management
- Air Quality
- Greenhouse Gas Emissions
- Water and Wastewater Management
- Product Design and Life Cycle Management
- Management of the Legal and Regulatory Environment

## SOCIAL

- Employee Engagement, Diversity and Inclusion
- Working Conditions
- Employee Health and Safety
- Human Rights and Community Relations
- Systemic Risk Management

## GOVERNANCE

- Work Ethics
- Business Model Flexibility
- Material Supply and Efficiency
- Customer Welfare
- Critical Case Risk Management
- Competitive Behavior
- Sales Practices and Product Labeling
- Supply Chain Management
- Product Quality and Safety
- Data Security and Customer Privacy

# Main Project Steps for Suppliers



Conducting the Basics of the Program Webinar  
Where Detailed Project Steps Will Be Conveyed



K-STAR Supplier Sustainability Maturity Assessment



Assignment of Actions to  
Suppliers if Needed



Monitoring the Actions Assigned to  
Suppliers



# Supplier Sustainability Program Survey



5. Select activities that carried out in your company in the field of SOCIAL sustainability.

*Example*

	Your Answer		
	Yes	No	Planned to be implemented within 1 year
Sharing information publicly and transparently (when a negative situation occurs)	<input type="radio"/>	<input type="radio"/>	<input type="radio"/>
Business ethics, anti-bribery and anti-corruption	<input type="radio"/>	<input type="radio"/>	<input type="radio"/>
Occupational Health and Safety (OHS)	<input type="radio"/>	<input type="radio"/>	<input type="radio"/>
Protection of human rights and improvement of working conditions	<input type="radio"/>	<input type="radio"/>	<input type="radio"/>
Supply chain traceability	<input type="radio"/>	<input type="radio"/>	<input type="radio"/>
Platforms for delivering wishes, suggestions and complaints (the existence of platforms where employees and other stakeholders can present their opinions and suggestions)	<input type="radio"/>	<input type="radio"/>	<input type="radio"/>
Volunteering and corporate social responsibility activities	<input type="radio"/>	<input type="radio"/>	<input type="radio"/>
Freedom of association and collective bargaining	<input type="radio"/>	<input type="radio"/>	<input type="radio"/>

*Example*

10. Does senior management periodically monitor sustainability efforts and initiatives?

English ▾

Yes

No

11. Does your company operate in accordance with the laws and regulations to which it is subject?

Yes

No

12. Are there any ongoing lawsuits and/or penalties against your company in the last 2 years regarding environmental, human rights, personal rights, working conditions, OHS and/or ethics?

Yes

No



# Supplier Sustainability Program Survey



## K-STAR Supplier Sustainability Survey Manual

Example

Question Number	Question	Explanation
2	Which of the following issues related to sustainability do you have knowledge about?	
	United Nations Sustainable Development Goals (UN SDGs)	<p><i>The Sustainable Development Goals are a universal call to action that includes goals aimed to be achieved by the end of 2030 by United Nations member states.</i></p> <p><b>Click for more information:</b> <a href="https://sdgs.un.org/goals">https://sdgs.un.org/goals</a></p>
	United Nations Global Compact	<p><i>On January 31, 1999, at the World Economic Forum, United Nations (UN) Secretary-General Kofi Annan invited business leaders to unite under the Global Compact, an international initiative to bring together corporations, the UN, labor unions and non-governmental organizations in support of universal environmental and social principles in line with the Millennium Development Goals.</i></p> <p><b>Click for more information:</b> <a href="https://unglobalcompact.org/what-is-gc/mission/principles">https://unglobalcompact.org/what-is-gc/mission/principles</a></p>
	The European Green Deal and Carbon Border Adjustment Mechanism	<p><i>On the way to the European Union's (EU) goal of becoming a carbon-neutral continent by 2050, the European Green Deal, which envisages the penetration of climate change into all of the EU's policies, including industrial and trade policies, in the coming years, was announced on 11 December 2019. In this context, in order to prevent the shift of production to countries with less than the EU emission reduction target (carbon leakage), the implementation of the "Carbon Border Adjustment Mechanism" has been put on the agenda.</i></p> <p><b>Click for more information:</b> <a href="https://ec.europa.eu/info/law/better-regulation/have-your-say/initiatives/12228-EU-Green-Deal-carbon-border-adjustment-mechanism-en">https://ec.europa.eu/info/law/better-regulation/have-your-say/initiatives/12228-EU-Green-Deal-carbon-border-adjustment-mechanism-en</a></p>

Kibar Group Procurement

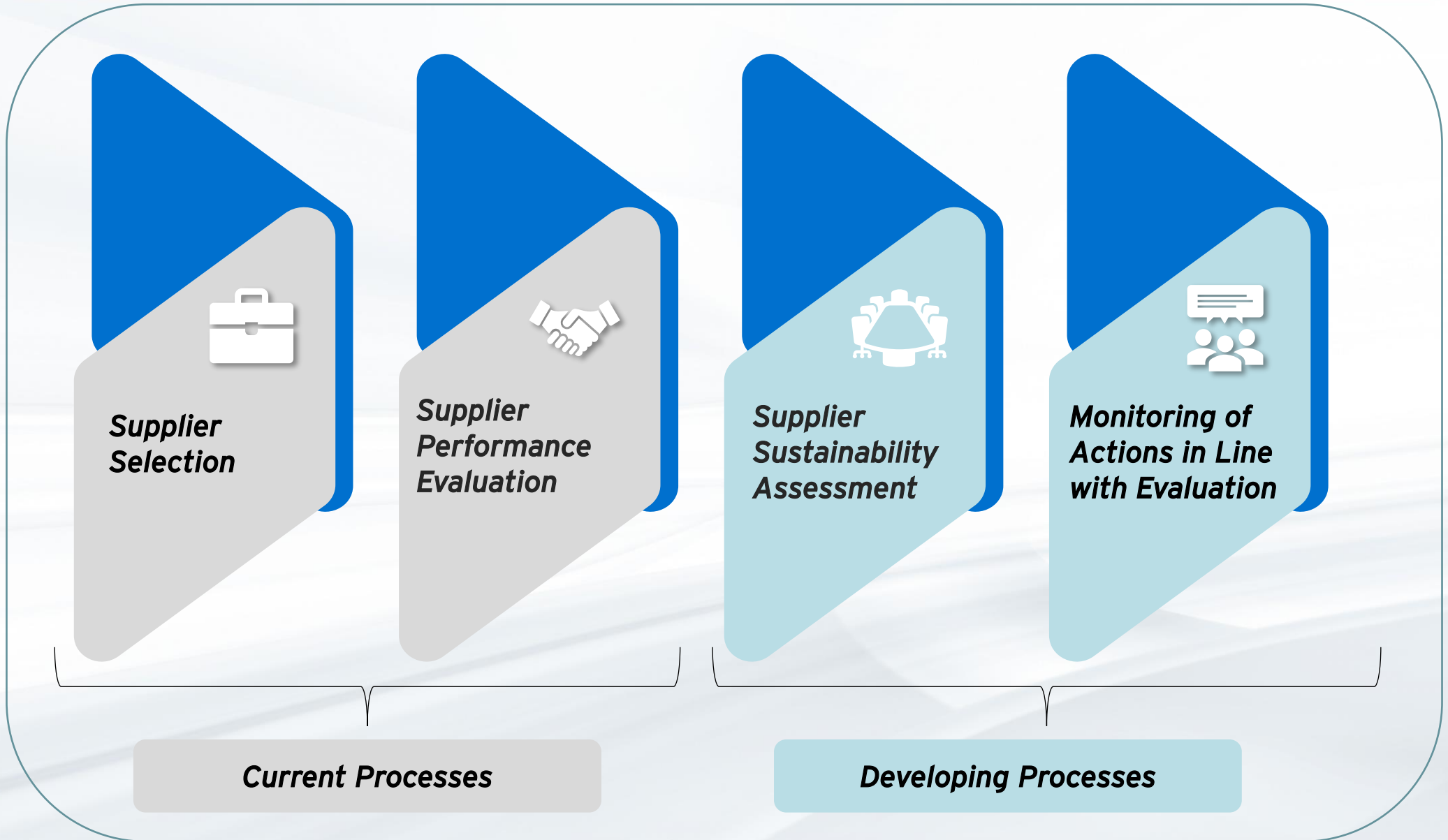
\* Questions marked in green will be opened conditionally according to the answer given to the question.



© 2023 Kibar Group.  
All Rights Reserved.

This publication is provided for general information only and is not intended to be used as an authoritative source of accounting, tax, legal or other professional services. The relevant procurement specialist should be consulted on a specific issue.

# Effects of the K-STAR to the Processes



A solid blue vertical bar positioned to the left of the section header.

## 3) Survey Interface



You will receive an e-mail from Kibar Group Procurement <noreply@qualtrics.ey.com> :

## K-STAR Kibar Group Supplier Sustainability Maturity Assessment Surveys



Kibar Group Procurement <noreply@qualtrics.ey.com>

To mailaddress@extension.com

[Reply](#) [Reply All](#) [Forward](#) [More](#)

Tue 28/03/2023 11:18

Dear Business Partner,

You can access the Sustainability Maturity Assessment Surveys of the K-STAR program, which we have shared recently, from the link below.

[Fill the Survey](#)

Or copy and paste the following URL into your internet browser:

[https://globelevsurvey.ey.com/ife/form/SV\\_8qb3CplhHcQx5pl?Q\\_DL=wxQjnG03wnPBzUB\\_8qb3CplhHcQx5pl\\_CGC\\_YMRhpvqhkY1qQRE&Q\\_CHL=email](https://globelevsurvey.ey.com/ife/form/SV_8qb3CplhHcQx5pl?Q_DL=wxQjnG03wnPBzUB_8qb3CplhHcQx5pl_CGC_YMRhpvqhkY1qQRE&Q_CHL=email)

The questionnaires consist of 3 main parts:

1. Your Institution Information
2. Change Management Questions
3. Sustainability Maturity Assessment Questions

Filling out our surveys will take **approximately 20 minutes** and will remain open to you **until xx/04/2023**. You can reach the supporting and informative documents that you can refer to if you need, by clicking on the links below or through the guiding links after you have entered the surveys.

**Survey Handbook:**

[KibarGrup K-STAR Survey Handbook](#)

**Basic Training Document:**

[KibarGrup K-STAR Training Document](#)

We would like to remind you once again that it is critical for the effectiveness of the action steps we will take as Kibar Group, based on the answers to be given, that you fill out the questionnaires accurately and completely within the specified time period, and thank you in advance for your sensitivity and valuable contributions.

Kibar Group Procurement



**Kibar Sustainable Tomorrow**  
for Accelerated Results



Follow the link to opt out of future emails:  
[Click here to unsubscribe](#)

# Qualtrics



1

To access the survey, click on the link here

## K-STAR Kibar Group Supplier Sustainability Maturity Assessment Surveys



Kibar Group Procurement <noreply@qualtrics.ey.com>  
To mailaddress@extension.com

Reply Reply All Forward

Tue 28/03/2023 11:18

Dear Business Partner,

You can access the Sustainability Maturity Assessment Surveys of the K-STAR program, which we have shared recently, from the link below.

[FilltheSurvey](#)

Or copy and paste the following URL into your internet browser:

[https://globaleysurvey.ey.com/ife/form/SV\\_8qb3CplhHcQx5pl?Q\\_DL=wxQjnG03wnPBzUB\\_8qb3CplhHcQx5pl\\_CGC\\_YMRhvpqhky1qQRE&Q\\_CHL=email](https://globaleysurvey.ey.com/ife/form/SV_8qb3CplhHcQx5pl?Q_DL=wxQjnG03wnPBzUB_8qb3CplhHcQx5pl_CGC_YMRhvpqhky1qQRE&Q_CHL=email)

The questionnaires consist of 3 main parts:

1. Your Institution Information
2. Change Management Questions
3. Sustainability Maturity Assessment Questions

Filling out our surveys will take **approximately 20 minutes** and will remain open to you **until xx/04/2023**. You can reach the supporting and informative documents that you can refer to if you need, by clicking on the links below or through the guiding links after you have entered the surveys.

### Survey Handbook:

[KibarGrup\\_K-STAR\\_Survey Handbook](#)

### Basic Training Document:

[KibarGrup\\_K-STAR\\_TrainingDocument](#)

## K-STAR Kibar Group Supplier Sustainability

KG Kibar Group Procurement <noreply@qualtrics.ey.com>  
To mailaddress@extension.com

Dear Business Partner,

You can access the Sustainability Maturity Assessment Surveys of the K-STAR program, which we have shared recently, from the link below.

[FilltheSurvey](#)

Or copy and paste the following URL into your internet browser:

[https://globaleysurvey.ey.com/ife/form/SV\\_8qb3CplhHcQx5pl?Q\\_DL=wxQjnG03wnPBzUB\\_8qb3CplhHcQx5pl\\_CGC\\_YMRhvpqhky1qQRE&Q\\_CHL=email](https://globaleysurvey.ey.com/ife/form/SV_8qb3CplhHcQx5pl?Q_DL=wxQjnG03wnPBzUB_8qb3CplhHcQx5pl_CGC_YMRhvpqhky1qQRE&Q_CHL=email)

The questionnaires consist of 3 main parts:

1. Your Institution Information
2. Change Management Questions
3. Sustainability Maturity Assessment Questions

Filling out our surveys will take approximately 20 minutes and will remain open to you until xx/04/2023.

### Survey Handbook:

[KibarGrup\\_K-STAR\\_Survey Handbook](#)

### Basic Training Document:

[KibarGrup\\_K-STAR\\_TrainingDocument](#)

We would like to remind you once again that it is critical for the effectiveness of the K-STAR program that you complete the surveys.

Kibar Group Procurement



Kibar Sustainable Tomorrow  
for Accelerated Results



Follow the link to opt out of future emails:  
[Click here to unsubscribe](#)

2

To reach detailed explanations of the survey questions, you can reach the **Survey Handbook** from the link here

## K-STAR Kibar Group Supplier Sustainability Maturity Assessment Surveys



Kibar Group Procurement <noreply@qualtrics.ey.com>  
To mailaddress@extension.com

Reply Reply All Forward

Tue 28/03/2023 11:18

Dear Business Partner,

You can access the Sustainability Maturity Assessment Surveys of the K-STAR program, which we have shared recently, from the link below.

[FilltheSurvey](#)

Or copy and paste the following URL into your internet browser:

[https://globaleysurvey.ey.com/ife/form/SV\\_8qb3CplhHcQx5p1\\_Q\\_DL=wxQjnG03wnPBzUB\\_8qb3CplhHcQx5p1\\_CGC\\_YMRhvpqhky1qQRE&Q\\_CHL=email](https://globaleysurvey.ey.com/ife/form/SV_8qb3CplhHcQx5p1_Q_DL=wxQjnG03wnPBzUB_8qb3CplhHcQx5p1_CGC_YMRhvpqhky1qQRE&Q_CHL=email)

The questionnaires consist of 3 main parts:

1. Your Institution Information
2. Change Management Questions
3. Sustainability Maturity Assessment Questions

Filling out our surveys will take **approximately 20 minutes** and will remain open to you **until xx/04/2023**. You can reach the supporting and informative documents that you can refer to if you need, by clicking on the links below or through the guiding links after you have entered the surveys.

**Survey Handbook:**

[KibarGrup\\_K-STAR\\_Survey Handbook](#)

**Basic Training Document:**

[KibarGrup\\_K-STAR\\_TrainingDocument](#)

### K-STAR Kibar Group Supplier Sustain

KG Kibar Group Procurement <noreply@...>  
To mailaddress@extension.com

Dear Business Partner,

You can access the Sustainability Maturity Assessment Surveys of the K-STAR  
[FilltheSurvey](#)

Or copy and paste the following URL into your internet browser:  
[https://globaleysurvey.ey.com/ife/form/SV\\_8qb3CplhHcQx5p1\\_Q\\_DL=wxQjnG03wnPBzUB\\_8qb3CplhHcQx5p1\\_CGC\\_YMRhvpqhky1qQRE&Q\\_CHL=email](https://globaleysurvey.ey.com/ife/form/SV_8qb3CplhHcQx5p1_Q_DL=wxQjnG03wnPBzUB_8qb3CplhHcQx5p1_CGC_YMRhvpqhky1qQRE&Q_CHL=email)

The questionnaires consist of 3 main parts:

1. Your Institution Information
2. Change Management Questions
3. Sustainability Maturity Assessment Questions

Filling out our surveys will take approximately 20 minutes and will remain open

**Survey Handbook:**  
[KibarGrup\\_K-STAR\\_Survey Handbook](#)

**Basic Training Document:**  
[KibarGrup\\_K-STAR\\_TrainingDocument](#)

We would like to remind you once again that it is critical for the effectiveness of

Kibar Group Procurement



Follow the link to opt out of future emails:  
[Click here to unsubscribe](#)

3

You can access the **Training Document** by clicking on this link

- Basic concepts and global developments in the field of sustainability
- K-STAR Supplier Sustainability Program
  - Sustainability in Procurement
  - Program Content and Time Plan
  - Survey Structure
  - Funding and Incentive Proposals
- Technological infrastructure information to be used in the survey phase

K-STAR Kibar Group Supplier Sustainability Maturity Assessment Surveys

Kibar Group Procurement <noreply@qualtrics.ey.com>  
To mailaddress@extension.com

Dear Business Partner,

You can access the Sustainability Maturity Assessment Surveys of the K-STAR program, which we have shared recently, from the link below.  
[FilltheSurvey](#)

Or copy and paste the following URL into your internet browser:  
[https://globaleysurvey.ey.com/ife/form/SV\\_8qb3CplhHcQx5p1?Q\\_DL=wx2qjnG03wnPBzUB\\_8qb3CplhHcQx5p1\\_CGC\\_YMRhpvqhky1qQRE&Q\\_CHL=email](https://globaleysurvey.ey.com/ife/form/SV_8qb3CplhHcQx5p1?Q_DL=wx2qjnG03wnPBzUB_8qb3CplhHcQx5p1_CGC_YMRhpvqhky1qQRE&Q_CHL=email)

The questionnaires consist of 3 main parts:

1. Your Institution Information
2. Change Management Questions
3. Sustainability Maturity Assessment Questions

Filling out our surveys will take **approximately 20 minutes** and will remain open to you **until xx/04/2023**. You can reach the supporting and informative documents that you can refer to if you need, by clicking on the links below or through the guiding links after you have entered the surveys.

**Survey Handbook:**  
[KibarGrup\\_K-STAR\\_Survey Handbook](#)

**Basic Training Document:**  
[KibarGrup\\_K-STAR\\_TrainingDocument](#)

K-STAR Kibar Group Supplier Sustainability Maturity Assessment Surveys

Kibar Group Procurement <noreply@qualtrics.ey.com>  
To mailaddress@extension.com

Dear Business Partner,

You can access the Sustainability Maturity Assessment Surveys of the K-STAR program, which we have shared recently, from the link below.  
[FilltheSurvey](#)

Or copy and paste the following URL into your internet browser:  
[https://globaleysurvey.ey.com/ife/form/SV\\_8qb3CplhHcQx5p1?Q\\_DL=wx2qjnG03wnPBzUB\\_8qb3CplhHcQx5p1\\_CGC\\_YMRhpvqhky1qQRE&Q\\_CHL=email](https://globaleysurvey.ey.com/ife/form/SV_8qb3CplhHcQx5p1?Q_DL=wx2qjnG03wnPBzUB_8qb3CplhHcQx5p1_CGC_YMRhpvqhky1qQRE&Q_CHL=email)

The questionnaires consist of 3 main parts:

1. Your Institution Information
2. Change Management Questions
3. Sustainability Maturity Assessment Questions

Filling out our surveys will take approximately 20 minutes and will remain open to you until xx/04/2023. You can reach the supporting and informative documents that you can refer to if you need, by clicking on the links below or through the guiding links after you have entered the surveys.

**Survey Handbook:**  
[KibarGrup\\_K-STAR\\_Survey Handbook](#)

**Basic Training Document:**  
[KibarGrup\\_K-STAR\\_TrainingDocument](#)

We would like to remind you once again that it is critical for the effectiveness of the surveys that you complete them as soon as possible.

Kibar Group Procurement

Kibar Sustainable Tomorrow  
for Accelerated Results

1

When you click on the survey link, the following page will be opened in your internet browser:

K-STAR Kibar Group Supplier Sustainability Maturity Assessment



Kibar Group Procurement <noreply@qualtrics.ey.com>  
To mailaddress@extension.com

Dear Business Partner,

You can access the Sustainability Maturity Assessment Surveys of the K-STAR Program [FilltheSurvey](#)

Or copy and paste the following URL into your internet browser:  
[https://globaleysurvey.ey.com/fe/form/SV\\_8qb3CplHtHcQx5pl?Q\\_DL=wxQjnG03wnPBz](https://globaleysurvey.ey.com/fe/form/SV_8qb3CplHtHcQx5pl?Q_DL=wxQjnG03wnPBz)

The questionnaires consist of 3 main parts:

1. Your Institution Information
2. Change Management Questions
3. Sustainability Maturity Assessment Questions

Filling out our surveys will take **approximately 20 minutes** and will remain open on the links below or through the guiding links after you have entered the survey.

**Survey Handbook:**

[KibarGrup\\_K-STAR\\_Survey Handbook](#)

**Basic Training Document:**

[KibarGrup\\_K-STAR\\_TrainingDocument](#)

0% ————— 100%



English ▾

-. Dear Business Partner,  
Welcome to the K-STAR Program Sustainability Maturity Assessment Questionnaire. With this survey, we aim to evaluate your institution's maturity level in the field of sustainability and to identify possible change, transformation and development needs in order to ensure responsible purchasing activities in line with Kibar Group's sustainability strategy.

It is of great importance for us to construct the future of Kibar Group together, that you answer our questionnaire, which will take approximately 20 minutes, accurately and completely within the specified time (until 14.04.2023) and share your valuable opinions with us. We are stepping into this long-term journey together because "We are Strong Together!"

Before filling out the questionnaires, you can find important information below:

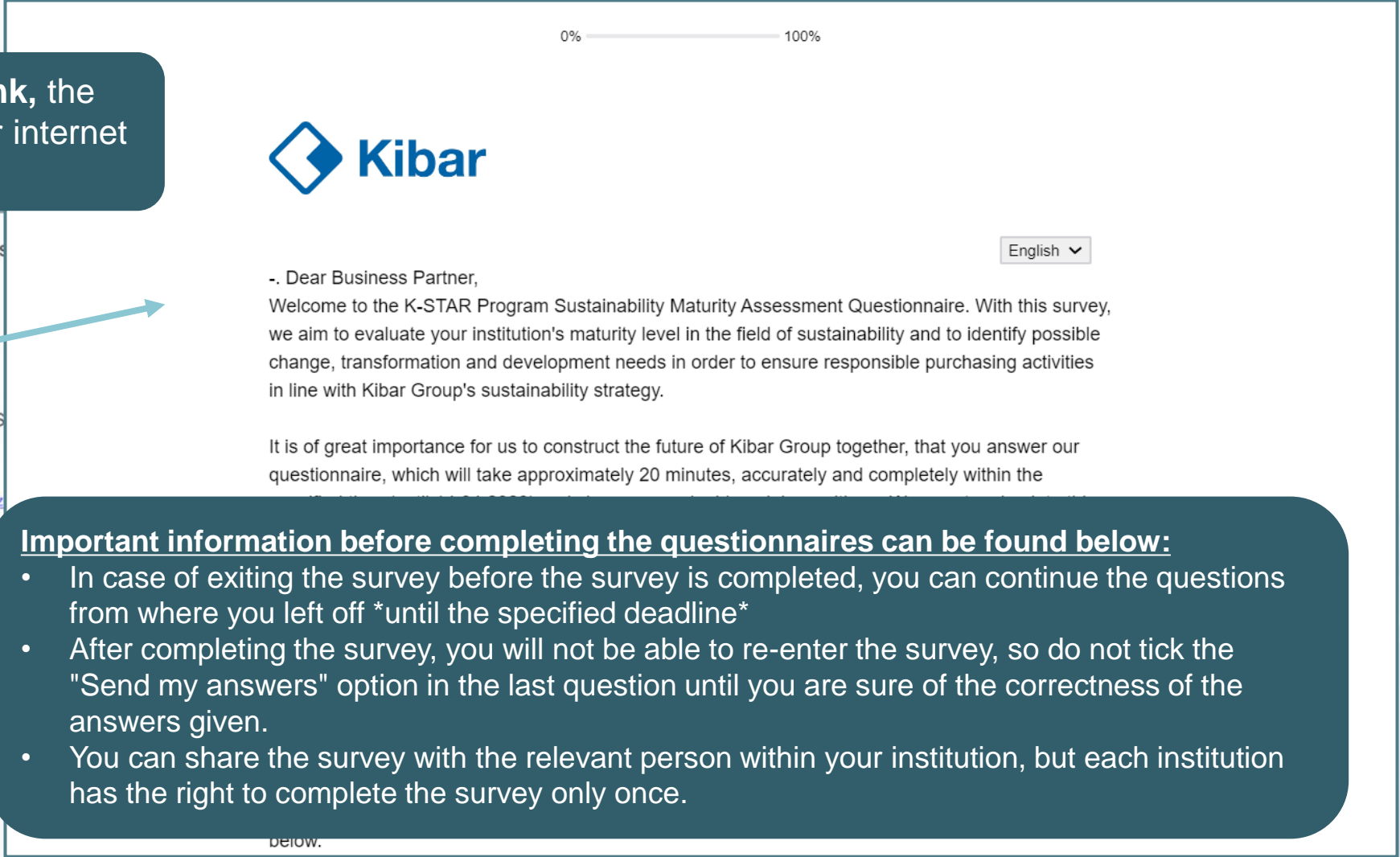
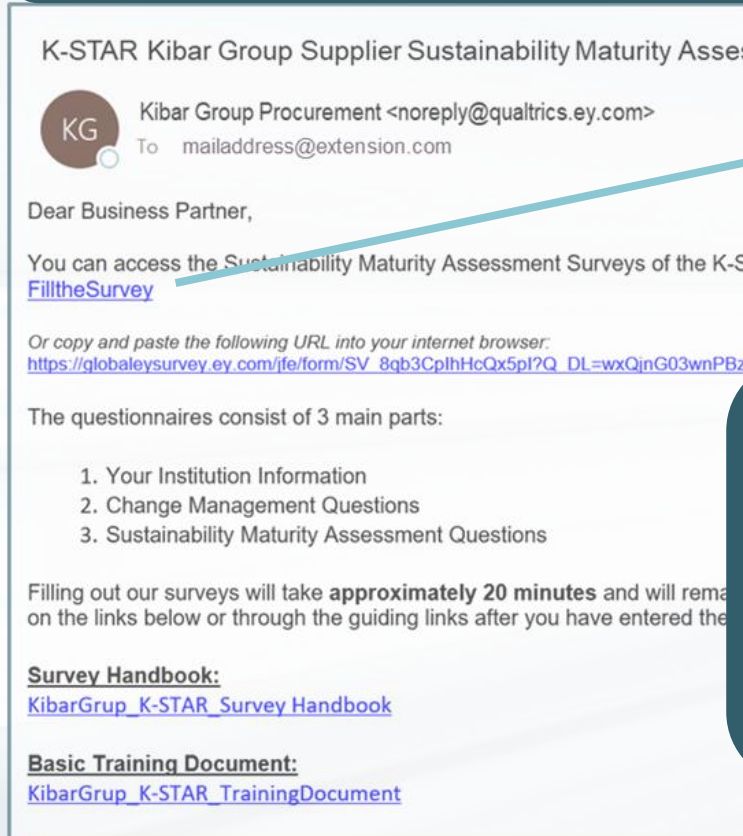
- In case of exiting the survey before the survey is completed, you can continue the questions from where you left off \*until the specified deadline\*
- After completing the survey, you will not be able to re-enter the survey, so do not tick the "Send my answers" option in the last question until you are sure of the correctness of the answers given.
- You can share the survey with the relevant person within your institution, but each institution has the right to complete the survey only once.

You can access the informative and supporting documents that you may need while filling out the questionnaires, including the explanations of the questions in the questionnaire, by going to the links below.



1

When you click on the survey link, the following page will be opened in your internet browser:



**Important information before completing the questionnaires can be found below:**

- In case of exiting the survey before the survey is completed, you can continue the questions from where you left off \*until the specified deadline\*
- After completing the survey, you will not be able to re-enter the survey, so do not tick the "Send my answers" option in the last question until you are sure of the correctness of the answers given.
- You can share the survey with the relevant person within your institution, but each institution has the right to complete the survey only once.

1.1

In the first part of the survey, you can find the questions related to **your company's general information**



-. Dear Business Partner,  
Welcome to the K-STAR Program Sustainability Maturity Assessment. We aim to evaluate your institution's maturity level in the field of sustainability change, transformation and development needs in order to ensure alignment in line with Kibar Group's sustainability strategy.

It is of great importance for us to construct the future of Kibar Group. This questionnaire, which will take approximately 20 minutes, accurately specifies the time (until 14.04.2023) and share your valuable opinions on our long-term journey together because "We are Strong Together!"

Before filling out the questionnaires, you can find important information:

- In case of exiting the survey before the survey is completed, you will be able to return to the survey where you left off "until the specified deadline"
- After completing the survey, you will not be able to re-enter the survey. There is a "Save answers" option in the last question until you are sure of the correctness of the answers.

You can access the informative and supporting documents that you may need while filling out the questionnaires, including the explanations of the questions in the questionnaire, by going to the links below.

Survey Handbook:

[KibarGrup\\_K-STAR\\_SurveyHandbook](#)

Program Training Document:

[KibarGrup\\_K-STAR\\_ProgramTrainingDocument](#)

We thank you in advance for your sensitivity and valuable contributions in this important step that will form the basis for the next stages of our program.

Please write your company's trade name:

-. How many employees does your company have?

0 - 10

11 - 30

31 and above

1.2

You are then expected to answer Change Management questions

1. Rate the following Change Management and Insights Questions

I do not agree 1 2 3 4 5 6 7 8 9 10 I agree

We know the purpose of the program and what it will serve

We are aware of what is expected from our organization within the scope of the program (activities, decision-making, approval processes, etc.)

We know where we can access information when we have questions or need information about the program

We are aware of the responsibilities that may be encountered with the program

We believe that the program supports our long-term strategies and will help us achieve our organizational goals



-. Dear Business Partner,  
Welcome to the K-STAR Program Sustainability Maturity Assessment. We aim to evaluate your institution's maturity level in the field of sustainability change, transformation and development needs in order to ensure alignment in line with Kibar Group's sustainability strategy.

It is of great importance for us to construct the future of Kibar Group. This questionnaire, which will take approximately 20 minutes, accurately assesses your maturity level at the specified time (until 14.04.2023) and share your valuable opinions on our long-term journey together because "We are Strong Together!"

Before filling out the questionnaires, you can find important information on the survey page.

- In case of exiting the survey before the survey is completed, you will be able to return to the survey where you left off \*until the specified deadline\*
- After completing the survey, you will not be able to re-enter the survey. However, you will have the "I did not provide answers" option in the last question until you are sure of the correctness of the answers.

1.3

At the end of our survey, you are expected to answer the **Sustainability Maturity Assessment Questions**

0% 100%



-. Dear Business Partner,  
Welcome to the K-STAR Program Sustainability Maturity Assessment Q we aim to evaluate your institution's maturity level in the field of sustaina change, transformation and development needs in order to ensure resp in line with Kibar Group's sustainability strategy.

It is of great importance for us to construct the future of Kibar Group tog questionnaire, which will take approximately 20 minutes, accurately and specified time (until 14.04.2023) and share your valuable opinions with long-term journey together because "We are Strong Together!"

Before filling out the questionnaires, you can find important information  
 • In case of exiting the survey before the survey is completed, you can d where you left off \*until the specified deadline\*  
 • After completing the survey, you will not be able to re-enter the survey answers" option in the last question until you are sure of the correctness

2. Which of the following issues related to sustainability do you have knowledge about?

	Your Answer		
	Have knowledge	Have limited knowledge	No idea
United Nations Sustainable Development Goals (UN SDGs)	<input type="radio"/>	<input type="radio"/>	<input type="radio"/>
United Nations Global Compact	<input type="radio"/>	<input type="radio"/>	<input type="radio"/>
The European Green Deal and Carbon Border Adjustment Mechanism	<input type="radio"/>	<input type="radio"/>	<input type="radio"/>
The Paris Agreement	<input type="radio"/>	<input type="radio"/>	<input type="radio"/>
Emissions Trading System	<input type="radio"/>	<input type="radio"/>	<input type="radio"/>
Integrated Solid Waste Management	<input type="radio"/>	<input type="radio"/>	<input type="radio"/>
Circular Economy	<input type="radio"/>	<input type="radio"/>	<input type="radio"/>
Net Zero Coalition	<input type="radio"/>	<input type="radio"/>	<input type="radio"/>

3. Does your company have a sustainability manager/executive?


- Yes
- No
- Planned to be implemented

4. Select the activities carried out within the scope of sustainability in your company.

You will be asked to upload an **evidence document** according to your answers to specific questions and to share the **expire date** of the relevant document.

0% 100%

0%



English ▾

32. Do you have a procurement process that includes sustainability criteria or management system (ISO 20400 Sustainable Procurement Standard, etc.)?

Yes

No

Planned to be implemented

← →

You will be asked to upload an **evidence document** according to your answers to specific questions and to share the **expire date** of the relevant document.



0% — 100%



32. Do you have a procurement process that includes sustainability criteria or management system (ISO 20400 Sustainable Procurement Standard, etc.)?

- Yes
- No
- Planned to be implemented



English ▾

32-1. Please share proof of your purchasing process, which includes sustainability criteria or management system (ISO 20400 Sustainable Procurement Standard, etc.).

Drop files or click here to upload

32-2. Please share the expiry date of the proof document of your purchasing process, which includes the sustainability criteria or the management system (ISO 20400 Sustainable Procurement Standard, etc.). (dd/mm/yyyy)

1) Select the relevant document from your computer by clicking the button «Drop files or click here to upload»

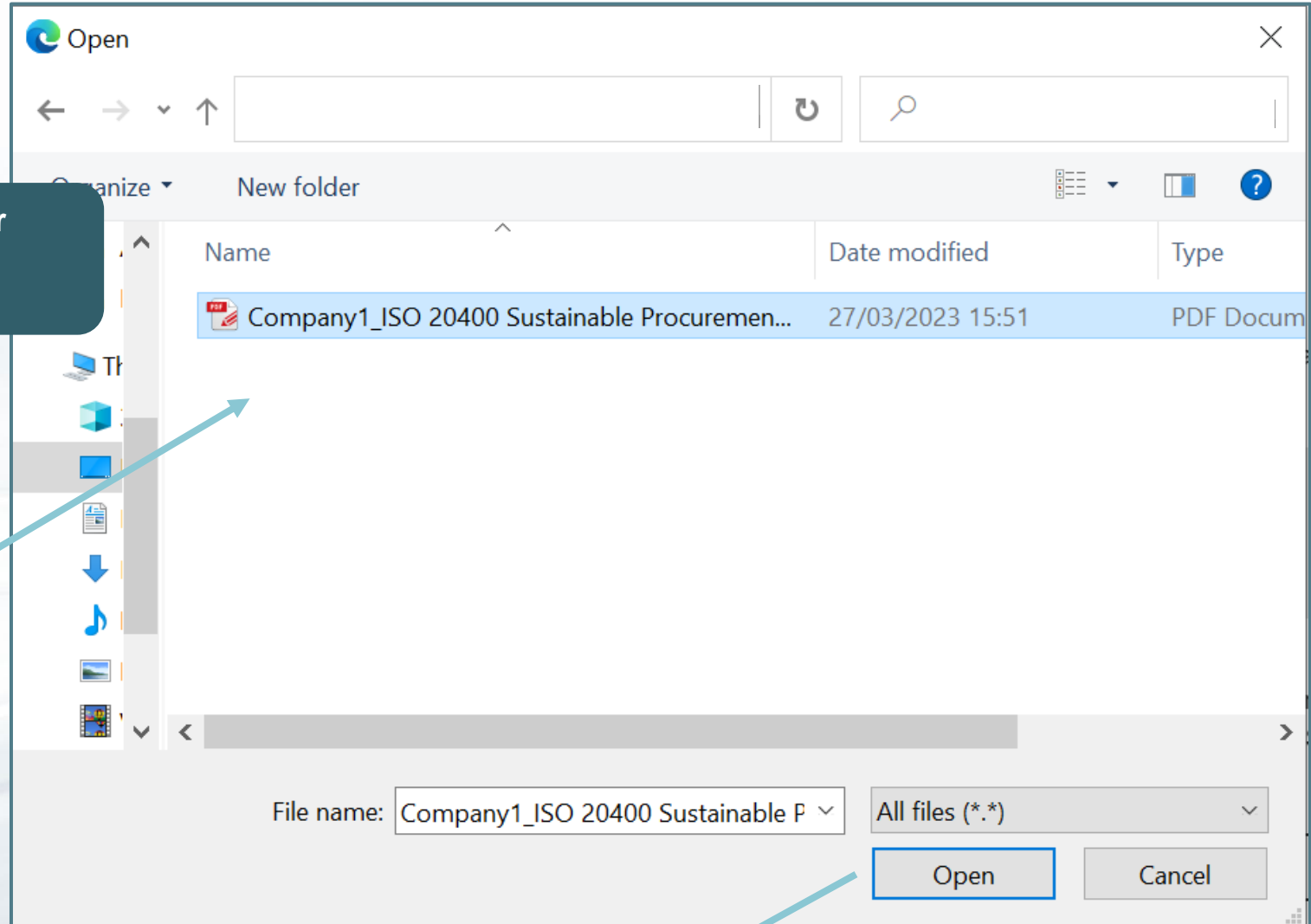


English ▾

32-1. Please share proof of your purchasing process, which includes sustainability criteria or management system (ISO 20400 Sustainable Procurement Standard, etc.).

Drop files or click here to upload

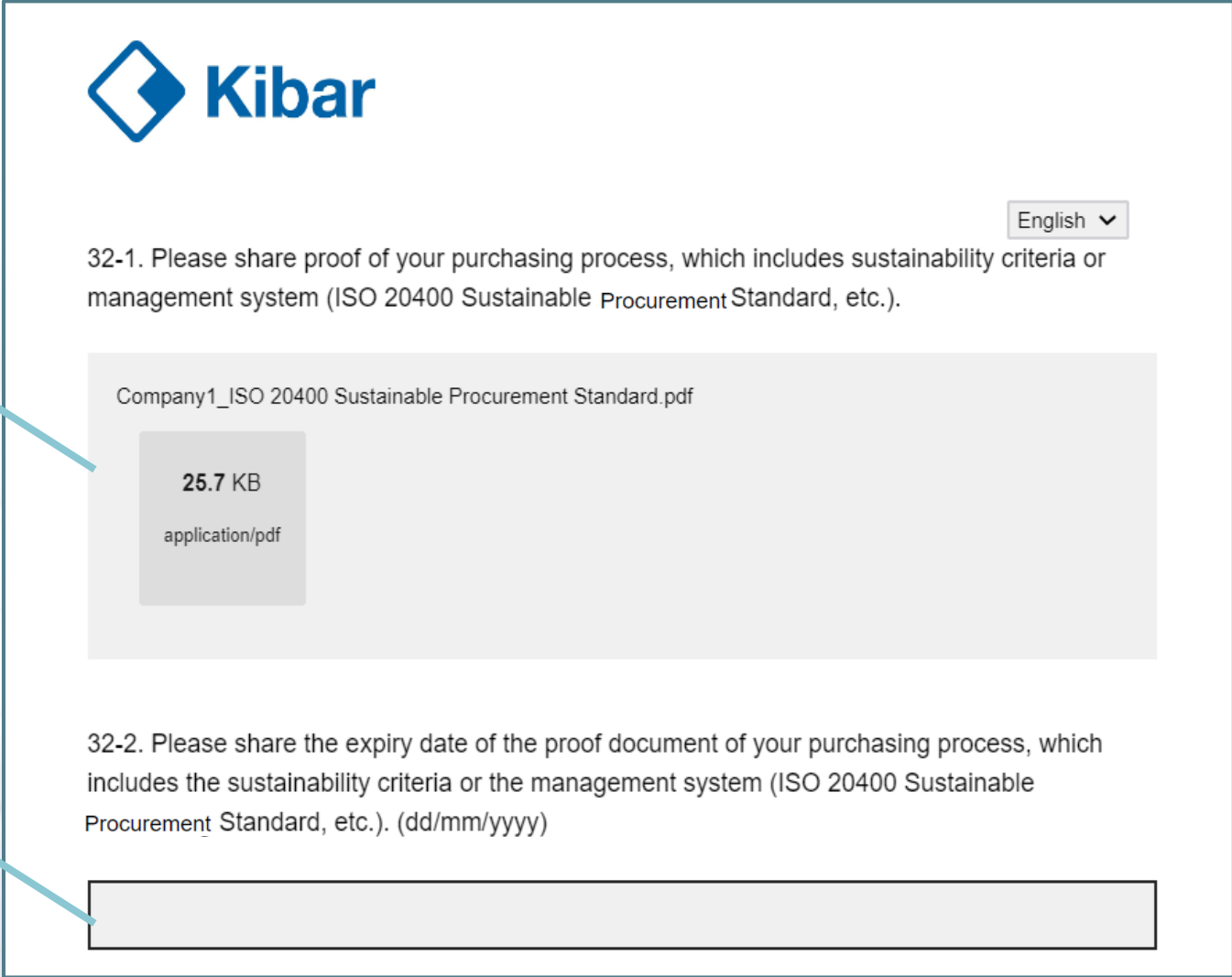
32-2. Please share the expiry date of the proof document of your purchasing process, which includes the sustainability criteria or the management system (ISO 20400 Sustainable Procurement Standard, etc.). (dd/mm/yyyy)



2) Load the document by clicking «Open»

**3) In this way, the document will be uploaded**

**4) If desired, please fill the expire date of the relevant document  
Fill in day/month/year format (dd/mm/yyyy)**



The screenshot shows the Kibar Qualtrics interface. At the top left is the Kibar logo. In the top right corner, there is a language dropdown menu set to "English". The main content area contains two questions:

32-1. Please share proof of your purchasing process, which includes sustainability criteria or management system (ISO 20400 Sustainable Procurement Standard, etc.).

Below this question, a document upload area is shown with the filename "Company1\_ISO 20400 Sustainable Procurement Standard.pdf". The file size is "25.7 KB" and the type is "application/pdf".

32-2. Please share the expiry date of the proof document of your purchasing process, which includes the sustainability criteria or the management system (ISO 20400 Sustainable Procurement Standard, etc.). (dd/mm/yyyy)

Below the second question is an empty text input field for the expiry date.



Once you have completed the survey, you will not be able to re-enter the survey, so do not select the **"Submit my answers"** option in the last question until you are sure that the answers are correct.

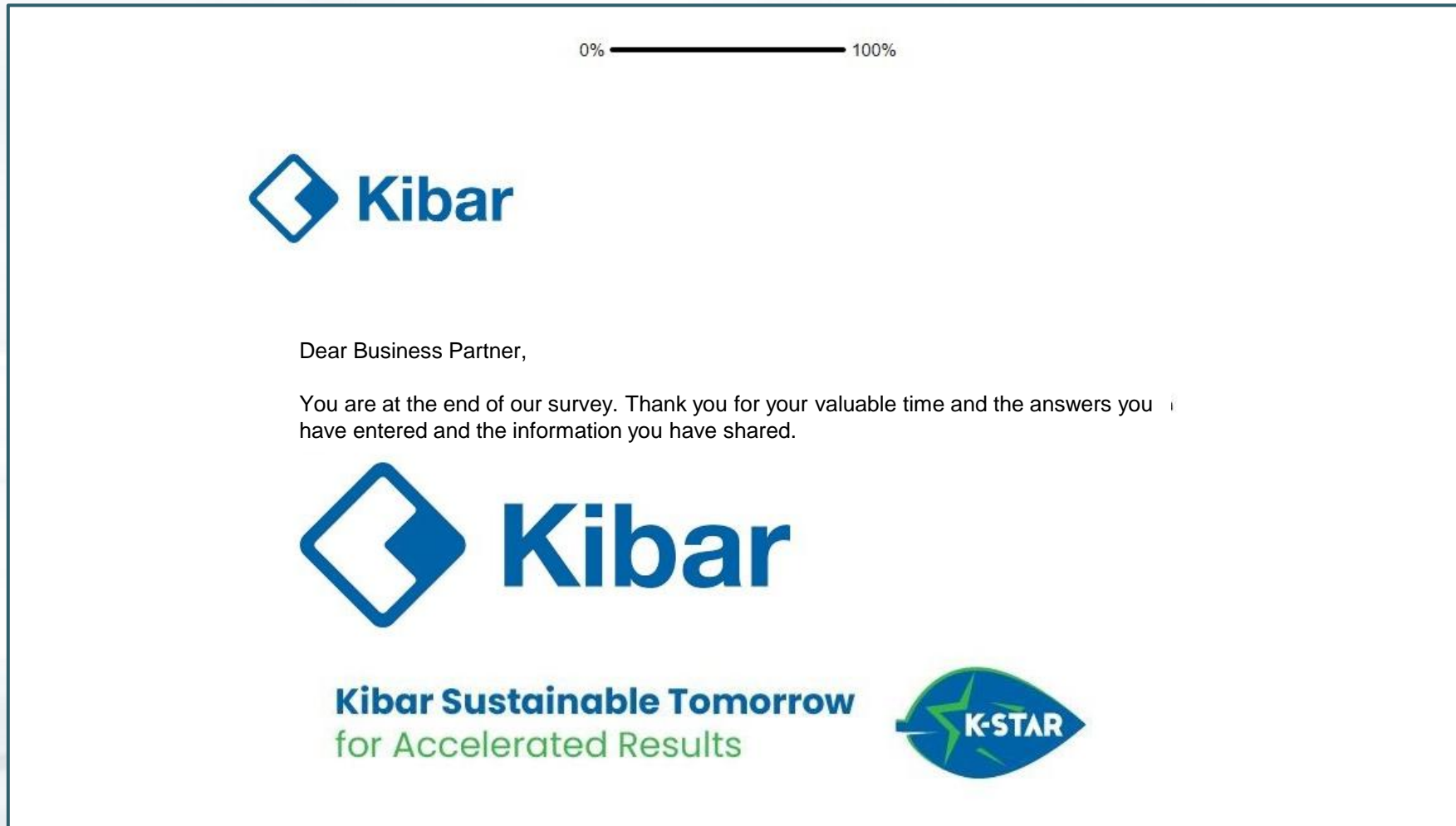
You answered all questions, please check your answers if necessary. When you move to the next page, your answers to the survey will be sent and you will not be able to change your answers.

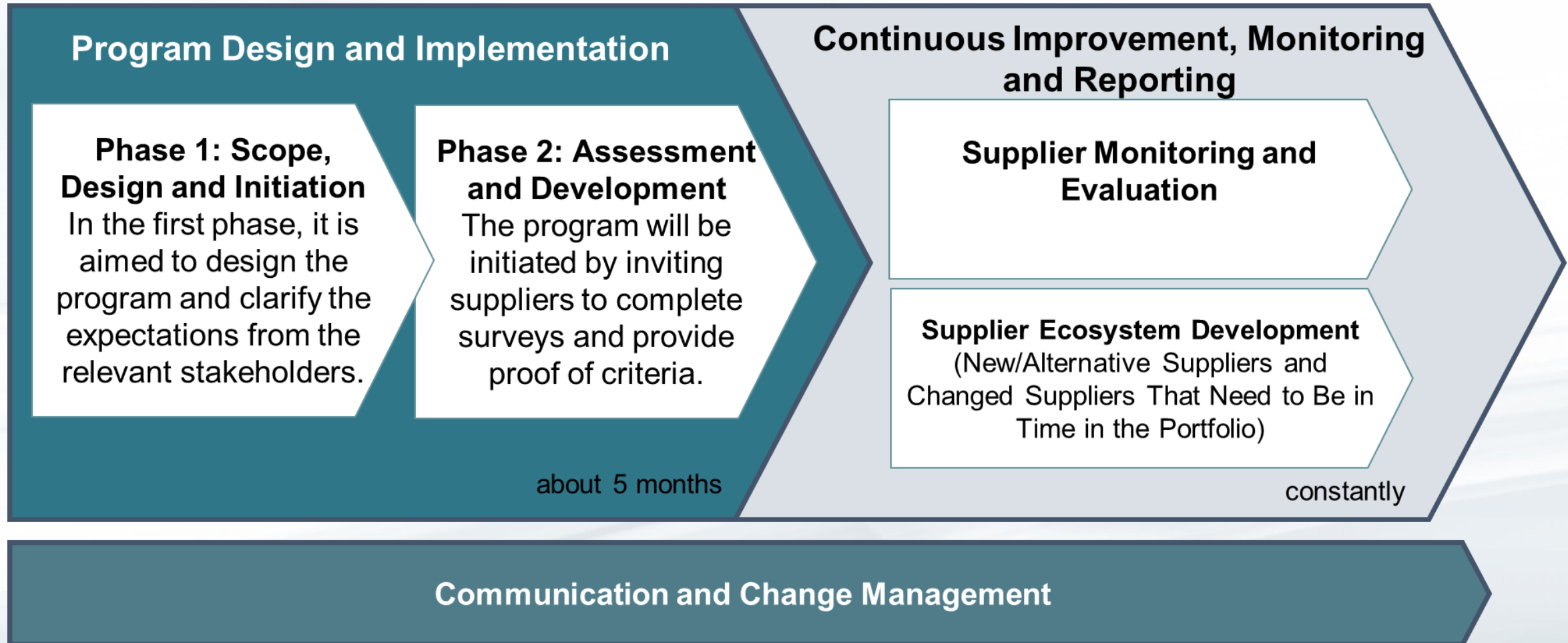
If you think you have completed the survey, tick the **Submit my answers** option below and proceed to the next page.

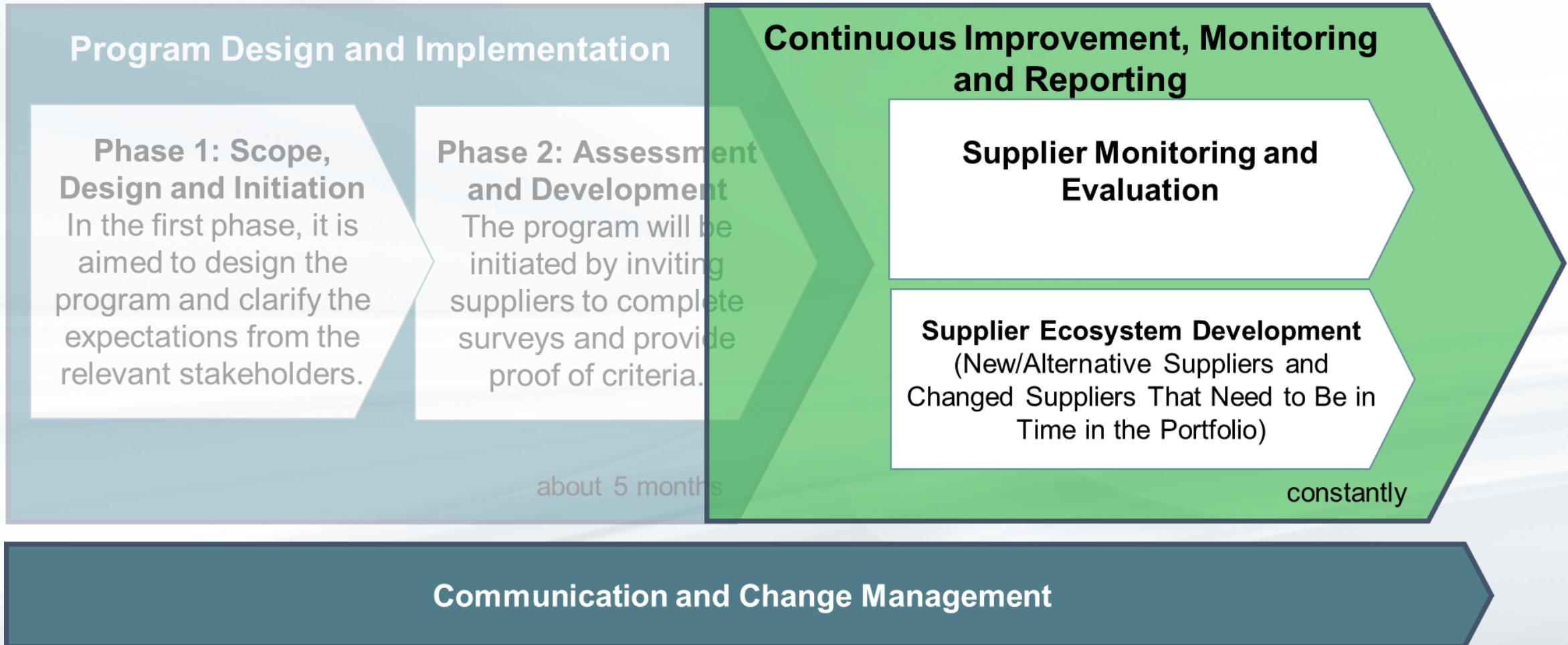
Submit my answers



The survey will be completed when the following screen appears:









# Thank You

**Kibar Sustainable Tomorrow**  
for Accelerated Results



A part of Orion Program

